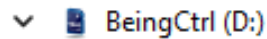


CanControllerManager

Attached, you will find a software that allows you to set the RTC time and switch between Logger and Analyzer modes.

To use the software, ensure that the uSD is named "BeingCtrl"; the label will be automatically assigned moreover you have to install vcp driver available here:

<https://www.st.com/en/development-tools/stsw-stm32102.html#get-software>



It is mandatory use only one device each time because software supports only one device with unique name BeingCtrl

To change the modality of use is necessary that the SD card is inside the controller and a USB Type-A to Type-C cable is connected to the device and PC, so you can utilize the CanControllerManager tool. There are several modalities available:

1. Logger Mode: (indicated by a fixed Green Light from device)

- Managed by BeingDecoder* software, allowing the creation of a Config.bei file containing CAN bus configuration and trigger settings. This file can be decoded using a .json format generated from a .dbc file, available on our website at <https://www.beingrobotic.com/dbcConverter>.

- Once the file is correctly opened and CAN packets arrive, the Blue light starts blinking.

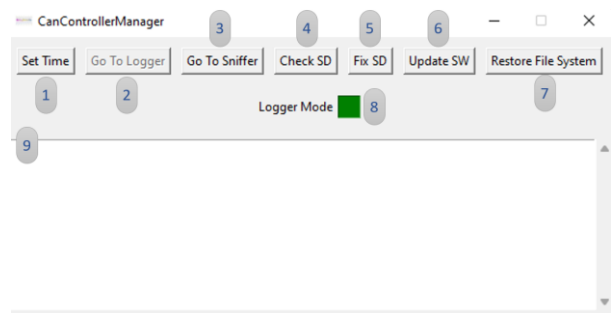
2. Analyzer Mode: (indicated by a fixed Blue Light from device)

- Allows sniffing and analyzing the CAN bus using the open-source program SavvyCAN, downloadable from:

https://github.com/collin80/SavvyCAN/releases/download/V208/SavvyCAN_CIBuild.zip

- When CAN packets arrive, the Green light also turns on.

To change the mode and manage device:



1. Set Time: This option synchronizes the internal RTC with the PC time. The device should be in Logger mode (indicated by the fixed Green Light or from program GUI). After selecting this option, a countdown starts. You need to disconnect and reconnect the USB before the countdown finishes. If the operation is successful, both times will be displayed, and the values should match.

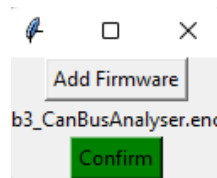
2. **Go to Logger:** To switch from Analyzer to Logger mode, disconnect the device from other programs (e.g., SavvyCAN) and select option 2. The light changes from blue to green. After selecting this option, disconnect and reconnect the USB.

3. **Go to Analyzer Mode:** To switch from Logger to Analyzer mode. The light should change to blue. Disconnect and reconnect the USB after selecting this option.

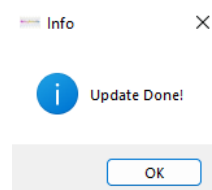
4. **Check SD:** This option attempts to find system corruption inside device uSD. If in Logger mode and the CAN bus is connected but the Blue light doesn't blink, try selecting this option.

5. **Fix SD:** This option attempts to fix file system corruption inside device uSD. If in Logger mode and the CAN bus is connected but the Blue light doesn't blink, try selecting this option.

6. **Update SW:** This option permits to update safely the firmware device. Add firmware download from BeingRobotic.com.



And Press confirms when the button became green. Reboot the device by disconnecting the power sources! When the LEDs stop flashing, reboot again the device by disconnecting the power and a message will be displayed. (2 reboot required)



Only the firmware downloads from BeingRobotic.com from user account are compatible. The other firmware are locked by licence manager.

7. **Restore File System:** This button permits to reset file system of uSD.

All files (including Config.bei) and logs will be deleted, and factory settings will be restored. This operation will not overwrite the firmware but will affect only the file system. Keep board connected until operation finish!

8. **Status Led:** This led indicates the mode of device and if it is connected.

9. **Command Windows:** gives more information on the operation.

Important:

When the software asks to Disconnect and reconnect device, be sure to power off the device.

If you encounter any issues or are unable to use the device, remember that you can also use the software by directly connecting the uSD card to the PC in order to restore the default settings.

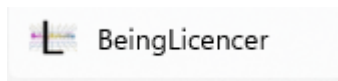
BeingDecoder Licence*

To obtain BeingDecoder Licence you need to log-in in www.beingrobotic.com and download

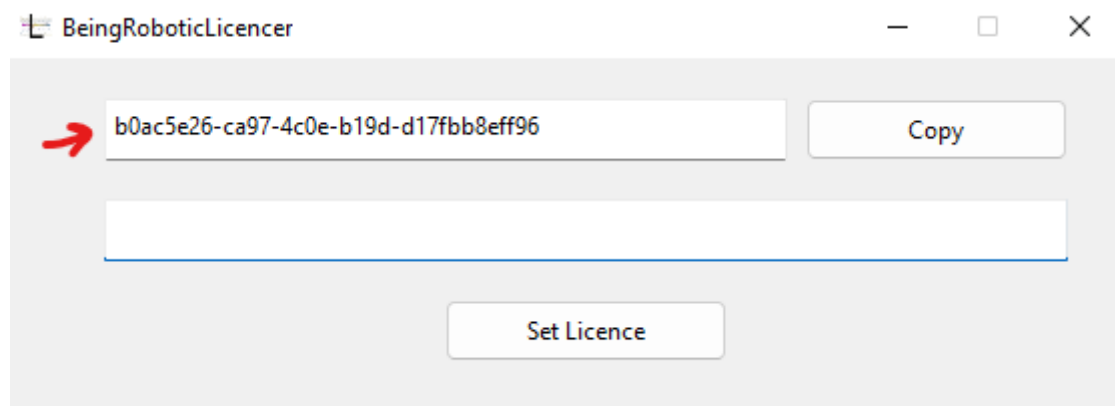
<https://www.beingrobotic.com/download/SetupLicencer.zip>

After program installation follow the below steps:

1)Run Program



2)Copy Licence Request code using button



3)Paste the code in <https://www.beingrobotic.com/BeingDecoder> form:

Licence request code:

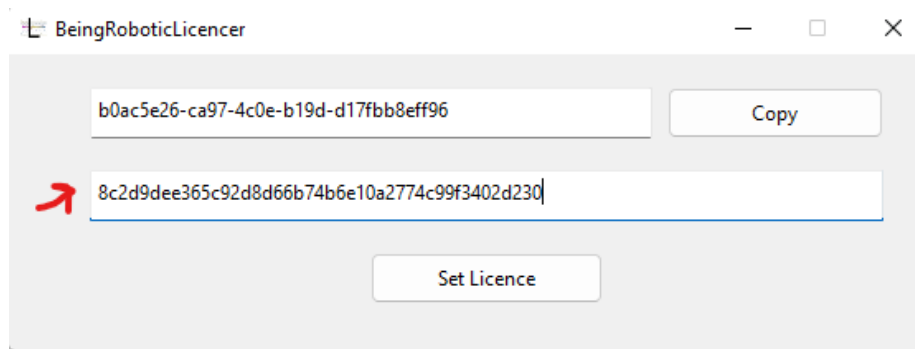
4)Press Request licence code

5)Copy Licence code

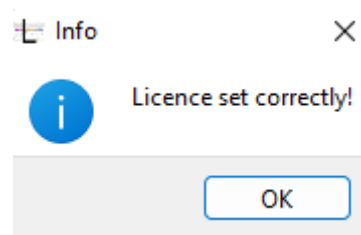
Licence request code:

Licence code:

6) Paste Licence code in BeingLicencer

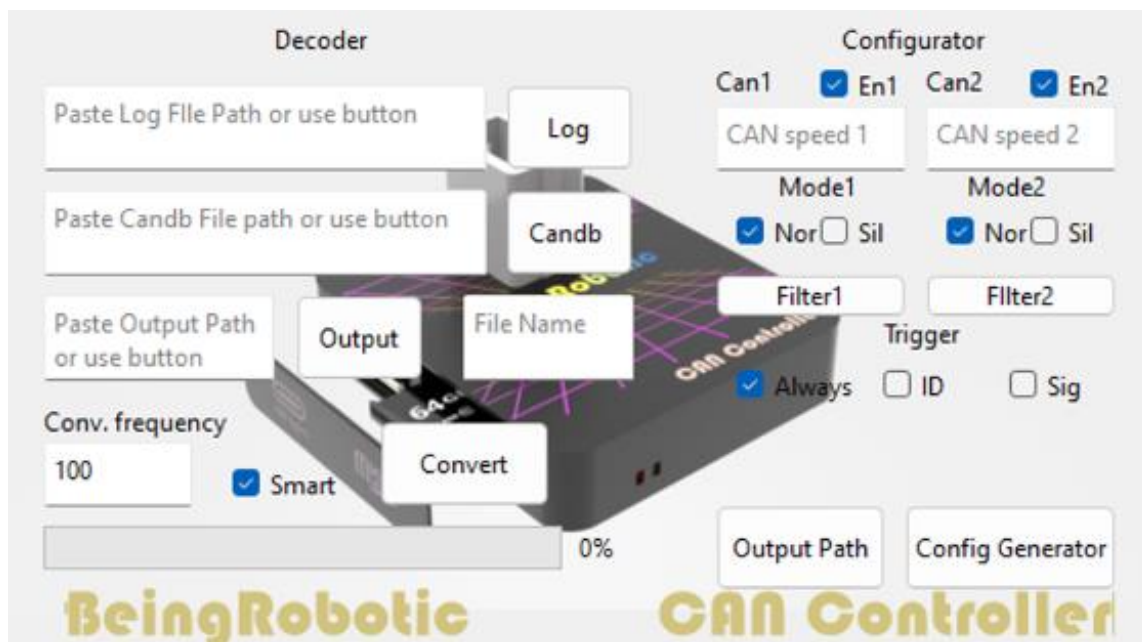


7) Press Set Licence



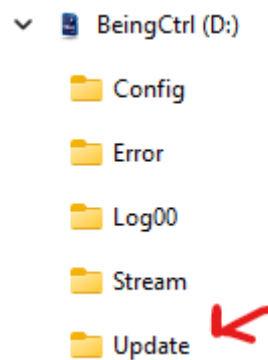
Now you can download, install and use BeingDecoder

<https://www.beingrobotic.com/download/BeingDecoderSetup.zip>



Alternative firmware update without application:

Connect Device, Unzip Update.zip folder attached to this mail and copy the content of this folder inside BeingCtrl -> Update folder.



Subscribe old file if necessary.

Disconnect Usb and reconnect (keep connected the Usb for at least 10 sec) you should see light blinking for 2 sec.

Please remember, as indicated at the time of purchase, that the device should be used in accordance with the disclaimer: https://www.beingrobotic.com/download/CanController_Disclamer.pdf